

SERPINF1 Antibody (N-term)
Purified Rabbit Polyclonal Antibody (Pab)
Catalog # AP7315a**Specification**

SERPINF1 Antibody (N-term) - Product Information

Application	WB, FC, IHC-P,E
Primary Accession	P36955
Reactivity	Human
Host	Rabbit
Clonality	Polyclonal
Isotype	Rabbit IgG
Calculated MW	46312
Antigen Region	9-36

SERPINF1 Antibody (N-term) - Additional Information**Gene ID** 5176**Other Names**

Pigment epithelium-derived factor, PEDF, Cell proliferation-inducing gene 35 protein, EPC-1, Serpin F1, SERPINF1, PEDF

Target/Specificity

This SERPINF1 antibody is generated from rabbits immunized with a KLH conjugated synthetic peptide between 9-36 amino acids from the N-terminal region of human SERPINF1.

Dilution

WB~~1:1000

FC~~1:10~50

IHC-P~~1:10~50

E~~Use at an assay dependent concentration.

Format

Purified polyclonal antibody supplied in PBS with 0.09% (W/V) sodium azide. This antibody is prepared by Saturated Ammonium Sulfate (SAS) precipitation followed by dialysis against PBS.

Storage

Maintain refrigerated at 2-8°C for up to 2 weeks. For long term storage store at -20°C in small aliquots to prevent freeze-thaw cycles.

Precautions

SERPINF1 Antibody (N-term) is for research use only and not for use in diagnostic or therapeutic procedures.

SERPINF1 Antibody (N-term) - Protein Information**Name** SERPINF1

Synonyms PEDF

Function Neurotrophic protein; induces extensive neuronal differentiation in retinoblastoma cells. Potent inhibitor of angiogenesis. As it does not undergo the S (stressed) to R (relaxed) conformational transition characteristic of active serpins, it exhibits no serine protease inhibitory activity.

Cellular Location

Secreted. Melanosome. Note=Enriched in stage I melanosomes

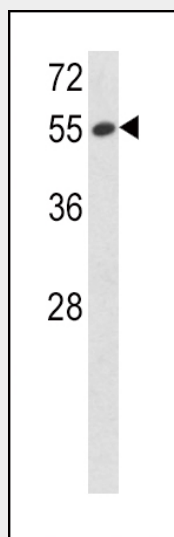
Tissue Location

Retinal pigment epithelial cells and blood plasma.

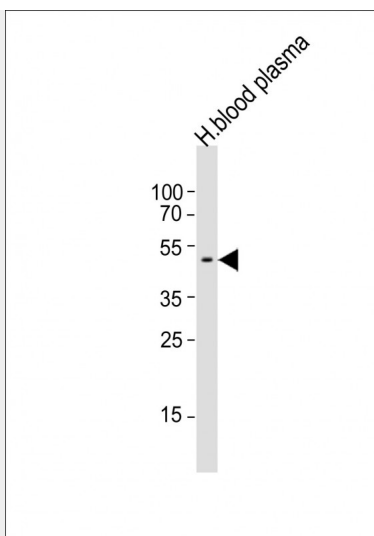
SERPINF1 Antibody (N-term) - Protocols

Provided below are standard protocols that you may find useful for product applications.

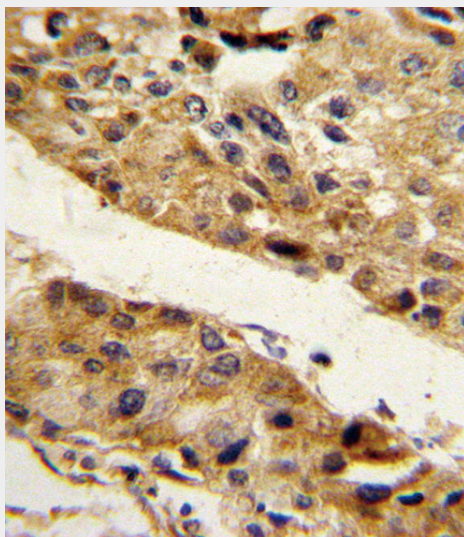
- [Western Blot](#)
- [Blocking Peptides](#)
- [Dot Blot](#)
- [Immunohistochemistry](#)
- [Immunofluorescence](#)
- [Immunoprecipitation](#)
- [Flow Cytometry](#)
- [Cell Culture](#)

SERPINF1 Antibody (N-term) - Images

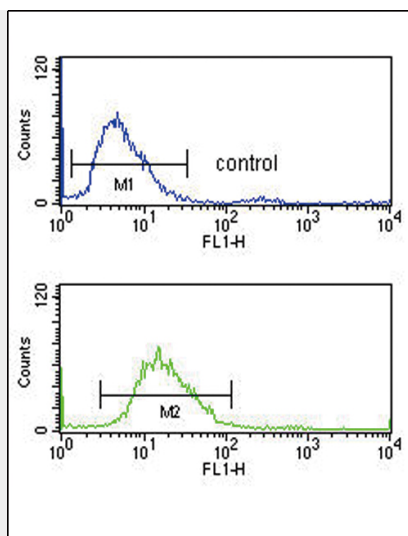
Western blot analysis of SERPINF1 Antibody (N-term) (Cat.# AP7315a) in 293 cell line lysates (35ug/lane). SERPINF1 (arrow) was detected using the purified Pab.



Anti-SERPINF1 Antibody (N-term) at 1:1000 dilution + human blood plasma lysates. Lysates/proteins at 20 µg per lane. Secondary Goat Anti-Rabbit IgG, (H+L), Peroxidase conjugated at 1/10000 dilution. Predicted band size : 46 kDa. Blocking/Dilution buffer: 5% NFDM/TBST.



Formalin-fixed and paraffin-embedded human hepatocarcinoma reacted with SERPINF1 Antibody (N-term), which was peroxidase-conjugated to the secondary antibody, followed by DAB staining. This data demonstrates the use of this antibody for immunohistochemistry; clinical relevance has not been evaluated.



SERPINF1 Antibody (N-term)(Cat. #AP7315a) flow cytometry analysis of 293 cells (bottom histogram) compared to a negative control cell (top histogram).FITC-conjugated goat-anti-rabbit secondary antibodies were used for the analysis.

SERPINF1 Antibody (N-term) - Background

SERPINF1 is a member of the serpin family. Serpins are a group of serine protease inhibitors, some of which have also been reported to exhibit neurotrophic activity.

SERPINF1 Antibody (N-term) - References

- Bessho,H., Kondo,N. Mol. Vis. 15, 1107-1114 (2009)
Petersen,S.V., Valnickova,Z. Biochem. J. 374 (PT 1), 199-206 (2003)
Tombran-Tink,J., Pawar,H. Genomics 19 (2), 266-272 (1994)